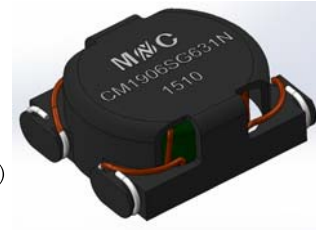


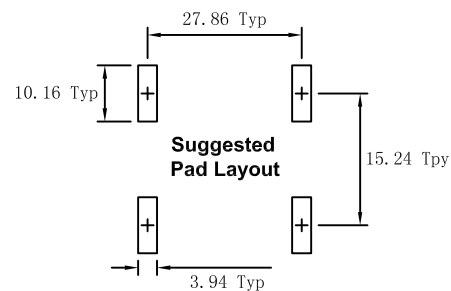
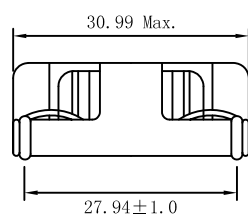
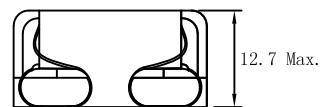
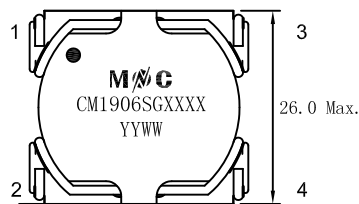
- Common mode chokes for AC Power lines
- High impedance to minimize common mode noise
- Excellent EMI performance
- Operate temperature range: -40 °C to +125 °C (Including self temperature rise)
- Storage temperature range: -40 °C to +125 °C



Electrical Specifications @25 °C

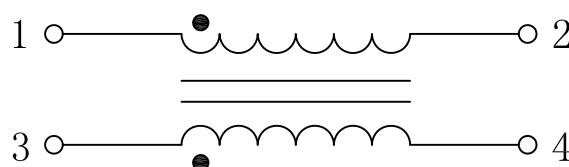
Part Number	OCL @10KHz, 0.1V (mH ± 35%)	DCR (mΩ Max.)	Turns Ratio	Rated Current (A Max.) ΔT ≅ 40°C	Hi-Pot 1mA/1S/50Hz (Vac)
	1-2, 3-4	1-2, 3-4	1-2, 3-4		1-2 TO 3-4
CM1906SG131N	0.135	3.5	1:1	26	1000
CM1906SG221N	0.59	6.0	1:1	20	1000
CM1906SG471N	0.47	8.0	1:1	14	1000
CM1906SG631N	0.63	10	1:1	11.6	1000
CM1906SG821N	0.82	15	1:1	7.0	1000

MECHANICAL



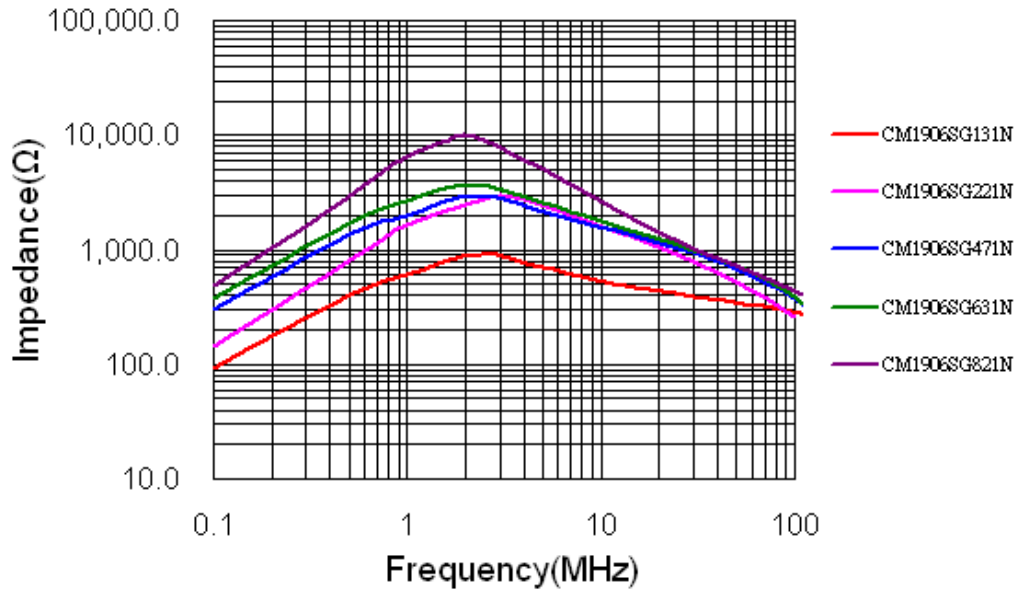
Unless otherwise specified all tolerances are: ±0.25 in mm

SCHEMATICS

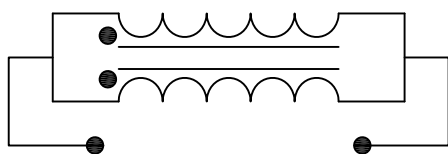
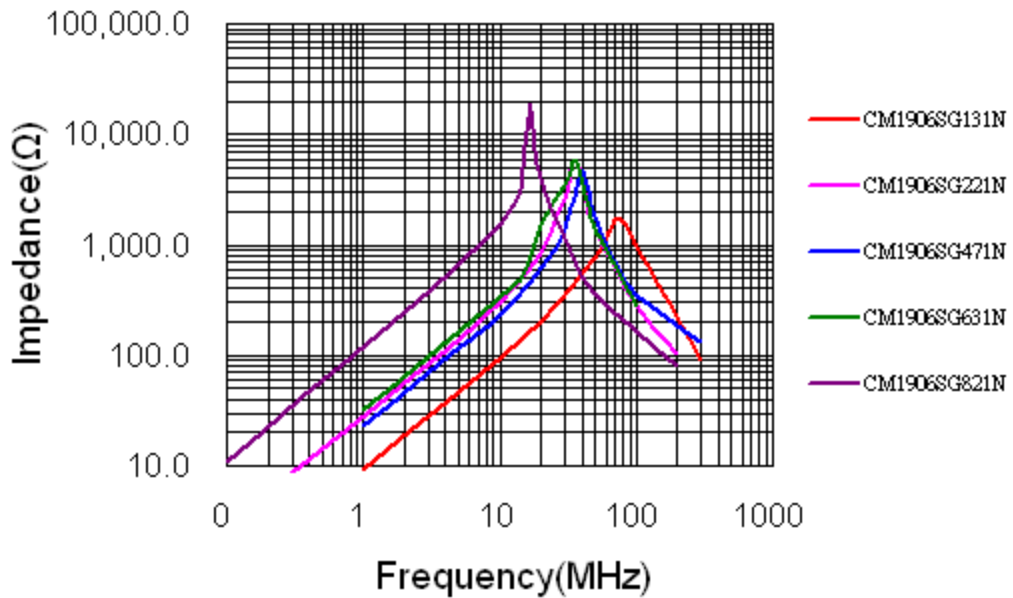


Impedance Vs Frequency

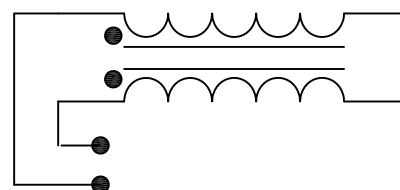
Common Mode



Different Mode



Common Mode



Different Mode